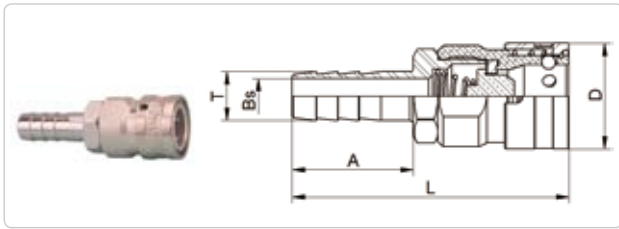
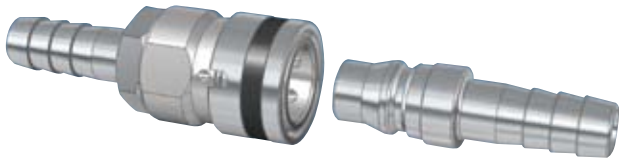


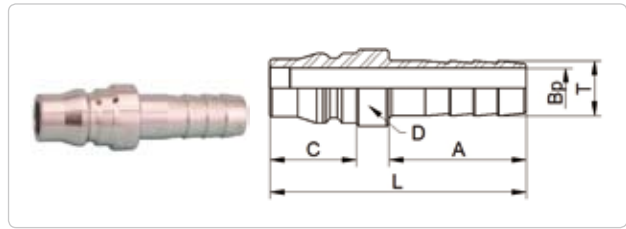
GRINDER COUPLER



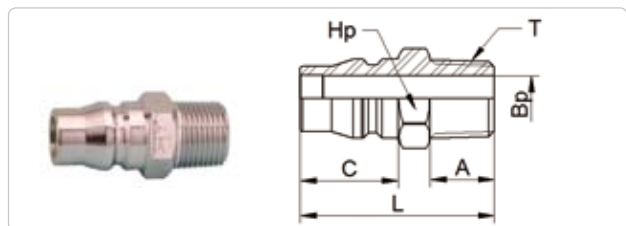
S (SOCKET)						
SH Type						
Model	Application	Dimensions (mm)				
		L	D	A	Bs	T
SH-315	15A 1/2" HOSE	78	29.7	34	10	13.7



- **Materials:** Body (AL7075), Sleeve (SUS304), Nipple (Brass, Steel, Zinc)
- **Features:**
 - ▶ Light weight, more flow compared to the size of two kinds of couplings to increase work efficiency.
 - ▶ Durability is excellent by applying duralumin(AL7075).



P (PLUG)							
PH Type							
Model	Application	Dimensions (mm)					
		L	D	A	C	T	Bp
PH-315	15A 1/2" HOSE	63.5	19	21.5	34	13.7	10



PM Type							
Model	Application	Dimensions (mm)					
		L	Hp	C	A	T	Bp
PM-302	4" Grinder	41.5	19	21.5	13	PT 1/4"	8
PM-303	7" Grinder	42.5	19	21.5	14	PT 3/8"	10

UNIVERSAL COUPLER

Universal Coupler is made free to be moved up, down, left, right and in a 360 degree swivel so that it can prevent hose twisting and kinking which often occur regularly in the workplace when moving the hose.



Model	Thread Size
USF-253	10A PT 3/8"
USF-253C	10A PT 3/8"
USF-353	10A PT 3/8"
USF-304	15A PT 1/2"
USF-504	15A PT 1/2"

UNIVERSAL NIPPLE



Type	Model	Hose Size	Thread Size	Applicable Grinder
HOSE-TYPE	UMH-0208	8A 5/16" HOSE	PT 1/4"	BABY
	UMH-0210	10A 3/8" HOSE		4"
	UMH-0215	15A 1/2" HOSE	PT 3/8"	7"
	UMH-0310	10A 3/8" HOSE		
	UMH-0315	15A 1/2" HOSE		

Type	Model	Thread Size	Applicable Coupler	Applicable Grinder
PLUG-TYPE	UMP-02358	PT 1/4"	SH-358	BABY
	UMP-02315	PT 1/4"	SH-315	4"
	UMP-03315	PT 3/8"	SH-315	7"
BUFFER-TYPE	UMBp-150	PT 1/4"	SH-315	4"
	UMBp-200	PT 3/8"	SH-315	7"